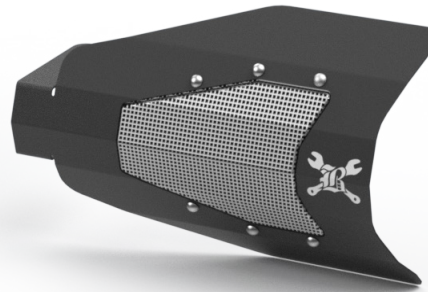
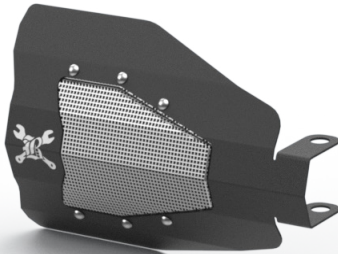


INSTALLATION INSTRUCTIONS

HAND GUARD SET

WARNINGS & ALERTS:

- READ AND FOLLOW ALL INSTRUCTIONS FOR A PROPER INSTALLATION.
- IMPROPER INSTALLATION CAN CAUSE UNSATISFACTORY AND/OR UNSAFE OPERATION.
- READ ALL THE INSTRUCTIONS CAREFULLY BEFORE INSTALLING THIS KIT ON YOUR MOTORCYCLE. USE YOUR SERVICE MANUAL AS A REFERENCE WHILE INSTALLING THIS KIT.



1. Turn off your motorcycle and place securely on a lift or motorcycle jack.
2. Remove mirror from brake and clutch perch.
3. Mount handguard to perch by sliding over housing and holding in place with mirror stem. If your kit comes with a hand guard with longer mounting legs it will be mounted to the cable clutch perch.
4. Hold mirror and hand guard in desired position and torque mirror stem nut to 10 ft-lbs



FIGURE 1



FIGURE 2

LIMITED GUARANTEE

We continually inspect and try to improve our products. All parts have been inspected prior to packaging, and our guarantee is limited to replacement of defective parts. This guarantee is in lieu of all guarantees or warranties implied or expressed. Because we can not control the application of our products, the buyer assumes risks for any and all damage caused by themselves or any third party, by virtue of failure of these parts. We make no warranty as to products distributed by us, expressed or implied, including without limitation, any warranties or merchant ability and fitness for particular purpose. We will, however, pass on all warranties made by the manufacturer, who has sole responsibility for performing such warranties. The manufacturer shall solely be responsible for any damage to person or property arising from design, manufacturing and testing of all products, and we accept no liability for such damages. We shall not be liable for indirect or consequential damages.