

INSTALLATION INSTRUCTIONS

MX EVO RIDER FLOORBOARDS HARLEY DAVIDSON TOURING BIKE MODELS

WARNINGS & ALERTS:

- READ AND FOLLOW ALL INSTRUCTIONS TO PROPERLY INSTALL THESE FLOORBOARDS.
- IMPROPER INSTALLATION CAN CAUSE UNSATISFACTORY AND/OR UNSAFE OPERATION.
- READ ALL THE INSTRUCTIONS CAREFULLY BEFORE INSTALLING THIS KIT ON YOUR MOTORCYCLE. USE YOUR SERVICE MANUAL AS A REFERENCE WHILE INSTALLING THIS KIT.



1. Turn off your motorcycle and place securely on a lift or motorcycle jack.
2. Remove OEM floorboards. Loosen the front mount to frame bolt (Figure 1) to ease installation of new boards.
3. Install the new MX EVO floorboards using supplied hardware (Figure 2).
4. Torque pivot bolts to 70 in-lbs (5.8 ft-lbs).
5. Retorque the front mount to frame bolt to 40 ft-lbs.
6. Repeat on other side of bike.



FIGURE 1

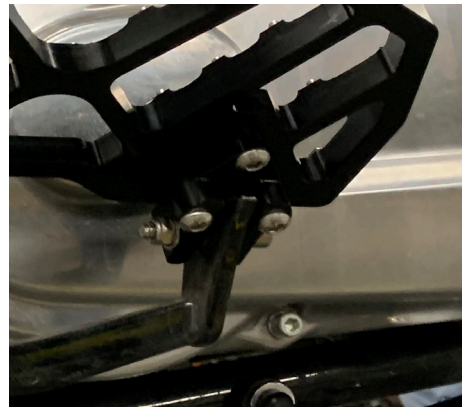


FIGURE 2



FIGURE 3

LIMITED GUARANTEE

We continually inspect and try to improve our products. All parts have been inspected prior to packaging, and our guarantee is limited to replacement of defective parts. This guarantee is in lieu of all guarantees or warranties implied or expressed. Because we can not control the application of our products, the buyer assumes risks for any and all damage caused by themselves or any third party, by virtue of failure of these parts. We make no warranty as to products distributed by us, expressed or implied, including without limitation, any warranties or merchant ability and fitness for particular purpose. We will, however, pass on all warranties made by the manufacturer, who has sole responsibility for performing such warranties. The manufacturer shall solely be responsible for any damage to person or property arising from design, manufacturing and testing of all products, and we accept no liability for such damages. We shall not be liable for indirect or consequential damages.